



Isono International Patent Office, P.C.



Corporate Profile

We aim to make a further leap forward with our motto “Work for clients’ benefits” .

Isono International Patent Office, P. C. commenced operations in April 2014, taking over the business of the former Isono International Patent Office which was founded in 1967, together with its experience over the decades. We will make tireless efforts to become a team of professionals that is trusted by clients and continuously improve our services to be one and only best patent office for clients.

We look forward to working for you.

Outline of our services



- Applications for patent, utility model, design and trademark
- Submission of an argument in writing in response to an office action
- Appeal against examiner’ s decision of rejection
- Litigation rescinding a trial decision
- Prior art search, deadline management, payment of patent annuity fees, various application for registration



- Filing a patent infringement suit (with a lawyer)
- Infringement opinion, validity opinion, research of materials on invalidation
- Request for interpretation/trial for invalidation
- Providing information to the Patent Office



- Extra-judicial conflict resolution procedures for patent, utility model, design, trademark, layout-design exploitation right and specific unfair competitions
- Procedures for import/export suspension in customs
- Agency service/consulting on a contract regarding intellectual property right
- Lecture on industrial property right
- Logomark Design Service

Features of our office

A team of professionals with a wealth of experience

We have experienced patent attorneys, patent engineers, translators, drawing engineers and staff specializing in trademark who can meet various clients' needs.

Our patent attorneys and patent engineers specialize in various technology fields. They can appropriately handle various complicated and sophisticated inventions in such technical fields as machines, mechatronics, control engineering, electronics/ telecommunications, semiconductors, civil engineering/construction, software, metals, organic chemistry, inorganic chemistry, medicine, biotechnologies and foods.

Our drawing engineers are highly-skilled professionals who are familiar with patent drawings and design drawings. They create accurate drawings for patent specifications by working in cooperation with patent attorneys and patent engineers.

We also have patent attorneys dedicated to trademarks. They are highly-qualified professionals who are acquainted with both domestic and international trademarks and can handle international trademark applications (Madrid protocol).

Furthermore, we have patent attorneys who exclusively work in the General Affairs Division to carry out perfect deadline management and formality procedure such as applications for registration.

Quality-oriented approach and high patent examination rate

We carry out careful and quality-oriented work in order to obtain broad and strong patents. When we prepare documents for applications, we make sure to understand the essence of inventions.

If an office action is issued, we propose the best solution taking account of clients' strategy.

As a result of our quality-oriented approach, we were identified as "Patent office with fewer rejection on descriptions" and "Patent office with fewer in rejections novelty" in 5 out of 8 technical fields (IPC section) in the "Japan Patent Office Annual Report 2007" .

The patent rate (*1) in 2013 was in excess of 80%. The "Japan Patent Office Annual Report 2007" identifies our office as "Patent office with high patent rate" in 5 technical fields.

*1: Patent examination rate = the number of patent applications allowed / (the number of patent applications allowed + the number of patents applications rejected)*100 The number of patents examined includes the number of patents examined during the pre-trial examination. The number of patents rejected includes the patent applications left alone without responding to office actions.

Disaster-proof Office

In consideration of business continuity and prompt recovery in the event of an earthquake, our office operates in a building with high seismic performance (Seismic Safety Rating Class II in the "Comprehensive Seismic Planning Standards for Government Facilities").

The Ichibancho area of Chiyoda-ku is located outside of the flood and storm surge inundation zones, so there is no need to worry about flood damage caused by typhoons or torrential rains. We will firmly protect your important intellectual property in light of the hardware side as well.

ISONO's Efforts ~ Aiming to increase client satisfaction ~

Since our founding in April 1967, we, Isono International Patent Office, P.C., have maintained a client-oriented approach to business management and a focus on quality, with the motto of "using our expertise to work for the benefit of our clients."

While conducting our daily operations based on the recognition that it is a requirement for professionals to do their utmost even in a limited amount of time and to do the best and most appropriate work in accordance with the client's intentions, we are implementing various initiatives to enhance client satisfaction, including efforts to raise the quality of our work, to improve security, and to strengthen due date management.

We will continue to strive to be the number one and only one IP firm for our clients by strengthening our service system through organizational management and productivity improvement while striving to remain professional, and by continuing to implement initiatives to increase client satisfaction.



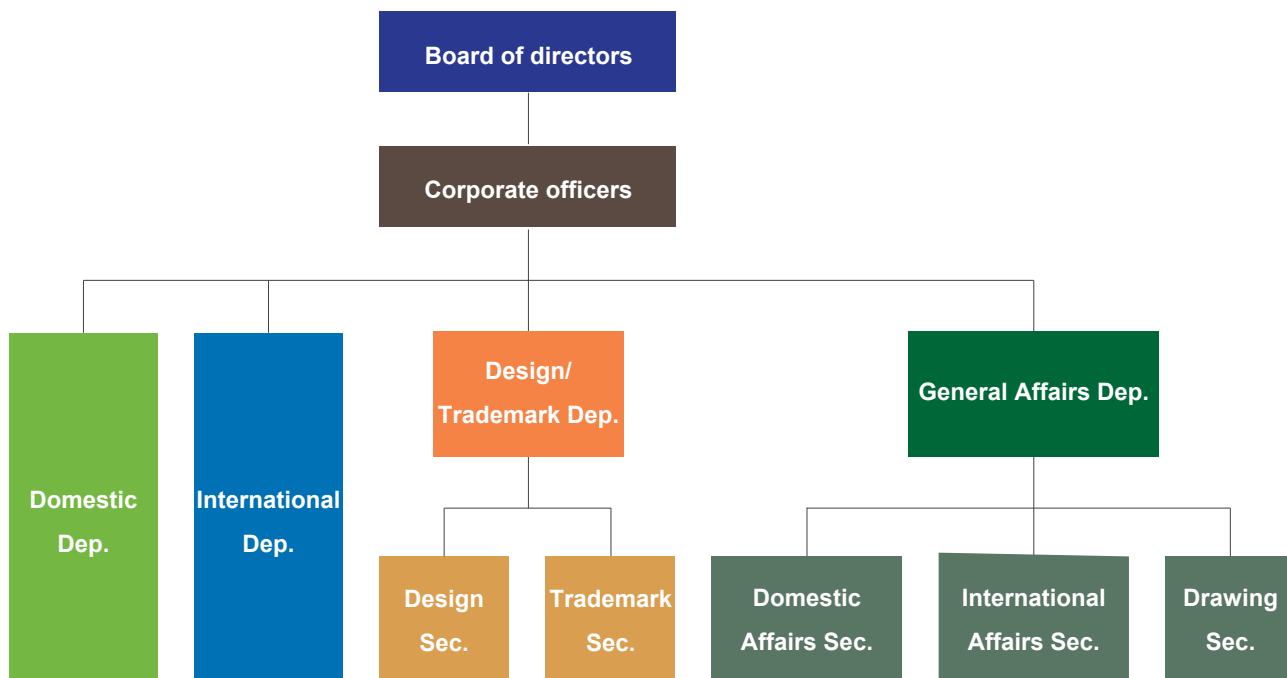
Qualified members

■ Board of directors
 ■ Domestic Department
 ■ International Department
 ■ Design/Trademark Department

※ Patent attorney, Supplementary Note of Specific Infringement Lawsuit Counsel

<p>■ Senior Partner Patent attorney</p> <p>Yoshiyuki MACHIDA※</p> <p>Civil engineering, construction, machine, design, litigation</p>	<p>■ Partner Patent attorney</p> <p>Etsuo TADA</p> <p>Chemistry, machine, electronics, information, foods</p>	<p>■ Partner Patent attorney</p> <p>Masakazu UCHIDA※</p> <p>Civil engineering, construction, machine, design</p>	<p>■ Manager Patent attorney</p> <p>Ichiro FUJINAMI※</p> <p>Civil engineering, construction, machine</p>	<p>■ Manager Patent attorney</p> <p>Shinji NAKAMURA※</p> <p>Broadcasting, telecommunications, information processing</p>	<p>■ Manager Patent attorney</p> <p>Kenichiro AYAKI</p> <p>Machine, information processing, electronics, telecommunications,</p>
<p>■ Manager Patent attorney</p> <p>Kosaku YAMAZAKI</p> <p>Machine, automobile * General Manager of International Division</p>	<p>■ Patent attorney</p> <p>Masayuki ITO※</p> <p>Electronics, information</p>	<p>■ Patent attorney Professional engineer (Biology)</p> <p>Naoki ITO</p> <p>Biotechnology, metal</p>	<p>■ Patent attorney</p> <p>Ayako HATTORI</p> <p>High polymer chemistry, semiconductor</p>	<p>■ Patent attorney</p> <p>Masayuki FUJISAKI</p> <p>Machine, electronics, information</p>	<p>■ Patent attorney</p> <p>Shigeru MIZUTANI</p> <p>Electronics, business model, machine</p>
<p>■ Patent attorney</p> <p>Junichi KANAI※</p> <p>Materials, telecommunications</p>	<p>■ Patent attorney</p> <p>Yoshifumi OTSUKA</p> <p>Information and telecommunications, machine</p>	<p>■ Patent attorney</p> <p>Masahiro SHINGU</p> <p>Chemistry, materials, fisheries, foods, biotechnology</p>	<p>■ Patent attorney</p> <p>Kenji FUKUI</p> <p>Electronics</p>	<p>■ Patent attorney</p> <p>Hisato KOYAMA※</p> <p>Information, telecommunications, machine, control engineering Optics</p>	<p>■ Patent attorney</p> <p>Noriaki KIMINO</p> <p>Applied chemistry, biotechnology, medicine Optics</p>
<p>■ Patent attorney</p> <p>Junya MATSUSHIMA</p> <p>Machine, control engineering Chemistry, Materials, foods, Biotechnology</p>	<p>■ Patent attorney</p> <p>Kazuhisa OYAMA</p> <p>Electricity</p>	<p>■ Doctor of engineering</p> <p>Yuji OKUNAGA</p> <p>Electronics, information processing</p>	<p>■ Doctor of engineering</p> <p>Hiroshi ARITA</p> <p>Electronics</p>	<p>■ Doctor of science</p> <p>Yoshiki SAMESHIMA</p> <p>Software, information processing, telecommunications</p>	<p>■ Patent attorney</p> <p>Masayuki KATO※</p> <p>Materials, machine, automobile, civil engineering</p>
<p>■ Patent attorney Doctor of science</p> <p>Kazuya USUI</p> <p>Fisheries, molecular biology, machine</p>	<p>■ Patent attorney Doctor of science</p> <p>Takashi UMEZAWA</p> <p>Chemistry, medicine, foods, biotechnology</p>	<p>■ Patent attorney</p> <p>Ken KATO</p> <p>Machine, Automobile, Software</p>	<p>■ China Patent Attorney</p> <p>Yaocheng HU</p> <p>Machine Applied chemistry</p>	<p>■ Patent attorney</p> <p>Tatsuhisa ISHIKAWA</p> <p>Design * Also belongs to the General Affairs Division</p>	<p>■ Patent attorney</p> <p>Yuriko IWASAKI</p> <p>Trademark</p>
<p>■ Patent attorney</p> <p>Tsutomu HATAKEYAMA</p> <p>Design</p>					

Organization chart



About logomark



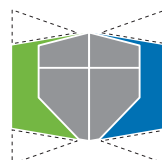
Open a door

Our logomark shows the image of opening a "door". This design represents the initial letter "I" of "Isono" appears behind the opened door. The design intends to convey the meaning of opening a door and proceeding with business operations to further improve client service on a new stage.



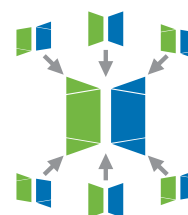
Protect with a Shield

An image of "SHIELD" is disposed in the center portion of the LOGO Mark and indicates that we are committed to protecting inventions, utility models, design and trademarks of our clients.



Change Viewpoint

We have imparted this LOGO Mark an image of a door that can be seen when viewed from various points of view. This image indicates that we always figure creative ideas of our clients by looking to them carefully from various angles.



Office Profile



■ Office name

Isono International Patent Office, P. C.

■ Corporate members

Yoshiyuki MACHIDA, Patent Attorney, Senior Partner

Etsuo TADA, Patent Attorney, Partner

Masakazu UCHIDA, Patent Attorney, Partner

■ Outline of service

Agency service regarding procedures related to the Patent Office (Applications for patent, utility model, design and trademark, request for various appeals, request for interpretation, provision of information)

Agency service regarding procedures related to the court (litigation rescinding a trial decision, patent infringement suit)

Giving expert opinions, investigation

Procedures for patent, utility model, design, trademark in foreign countries

Procedures for extra-judicial conflict resolution regarding patent, utility model, design, trademark, layout-design exploitation right and specific unfair

competitions Procedures regarding import/export suspension in customs

Agency service/consulting on a contract regarding intellectual property right

Lecture on industrial property right

■ Number of staffs

100 (28 patent attorneys, 1 China Patent Attorney, 5 doctors, 1 professional engineer) July 2022

■ Address

2F, Ichibancho Tokyu Bldg. 21, Ichibancho, Chiyoda-ku, Tokyo 102-0082, JAPAN

Telephone:+81-3-6333-0392 (changed) Facsimile:+81-3-6333-0393 (changed)

URL : <http://www.isonopat.gr.jp>

■ Company history

Apr 1967 Established Isono International Patent Office(The late Michizo Isono)

1997 30th anniversary, relocated the office to Sabo Kaikan

2000 Annual applications (patent, utility model, design, trademark, PCT) reached 1,000.

2011 Annual applications (patent, utility model, design, trademark, PCT) reached 2,000.

Aug 2013 Established Isono International Patent Office, P. C.

Apr 2014 Commenced operations as a Patent Corporation

Oct 2015 Relocated the office to Toranomom, Minato-ku, Tokyo

Apr 2017 50th anniversary

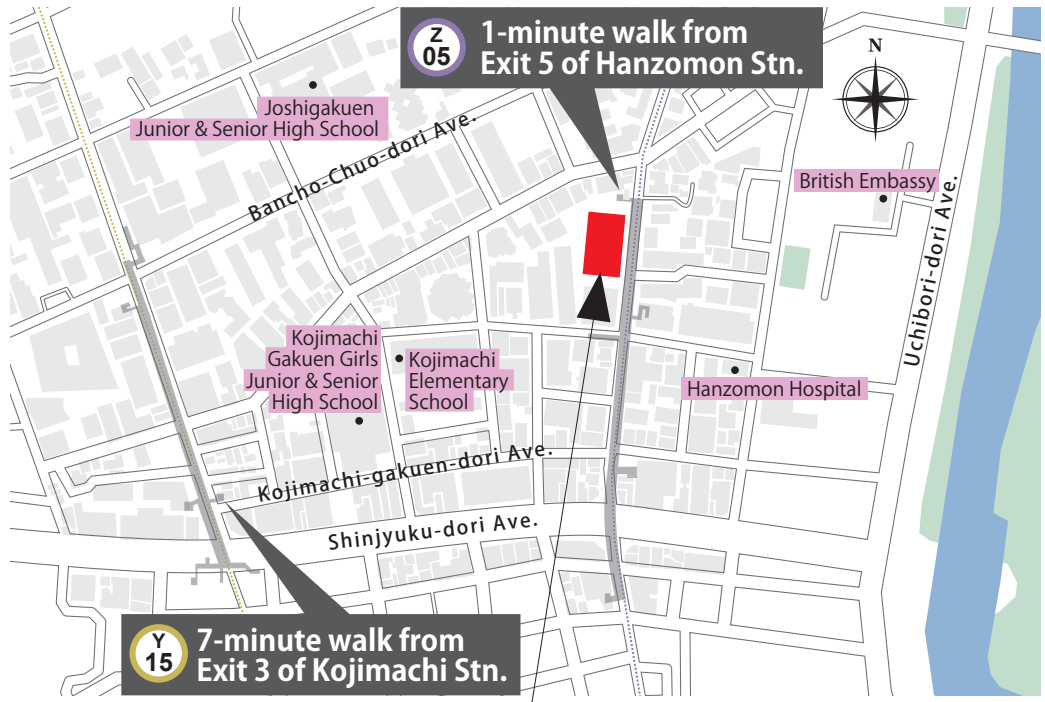
May 2018 Established Isono IP Services LLC

Jul 2022 55 years anniversary

Relocated the office to Hanzomon, Chiyoda-ku, Tokyo

ACCESS MAP

Access to our office

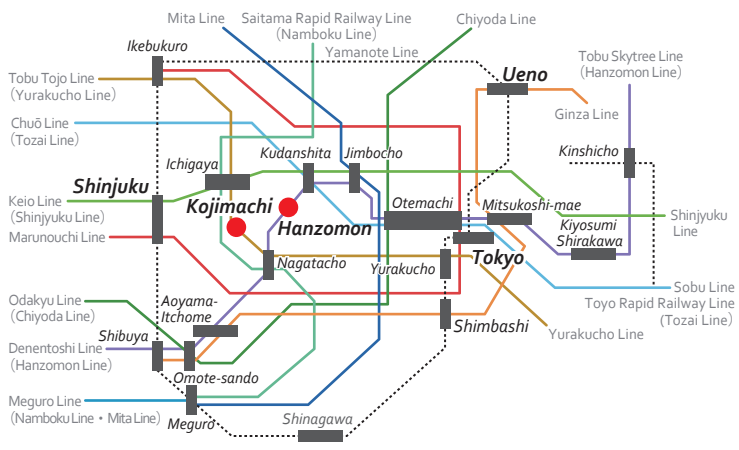


Office Profile

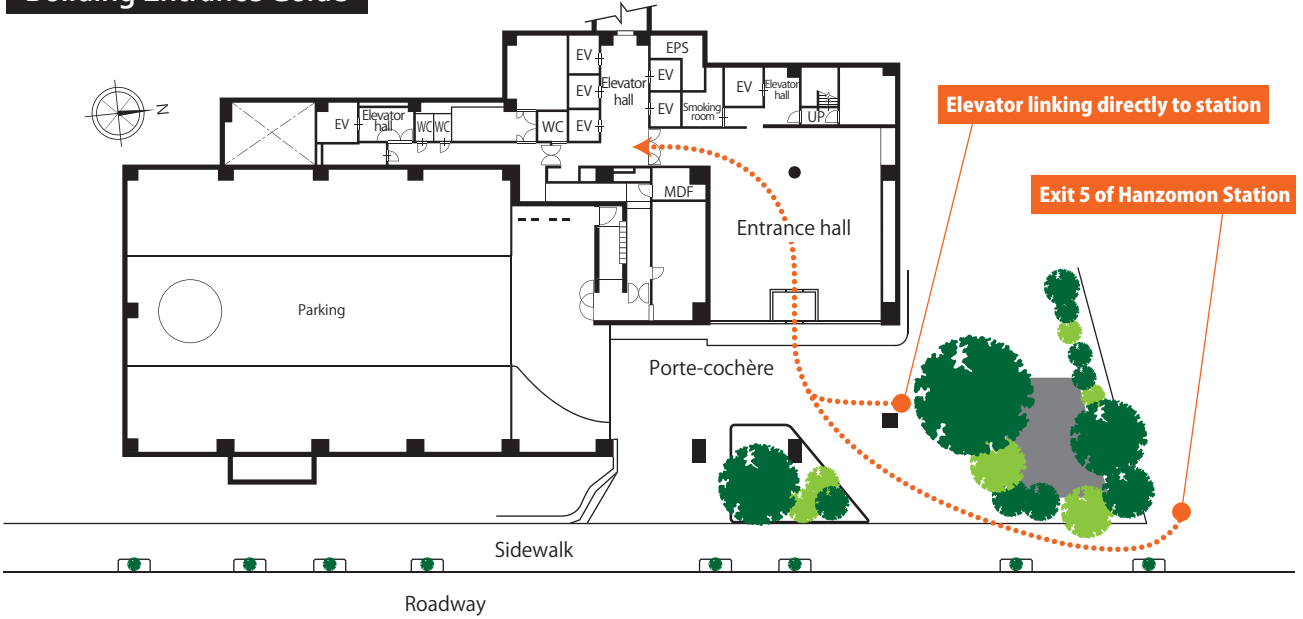
- Address : 2F, Ichibancho Tokyu Bldg.
21, Ichibancho, Chiyoda-ku, Tokyo 102-0082, JAPAN
- Telephone : +81-3-6333-0392
- Facsimile : +81-3-6333-0393

Transportation Guide

- From Tokyo Station**
Marunouchi line to Hanzomon line, transferred at Otemachi station
- From Ueno Station**
Ginza line to Hanzomon line, transferred at Mitsukoshimae station
- From Shinjuku Station**
Toei-Shinjuku line to Hanzomon line, transferred at Kudanshita station



Building Entrance Guide



ISONO International Patent Office, P.C.

Isono International Patent Office, P.C. All rights reserved.

Our Website is here →



<http://www.isonopat.gr.jp>